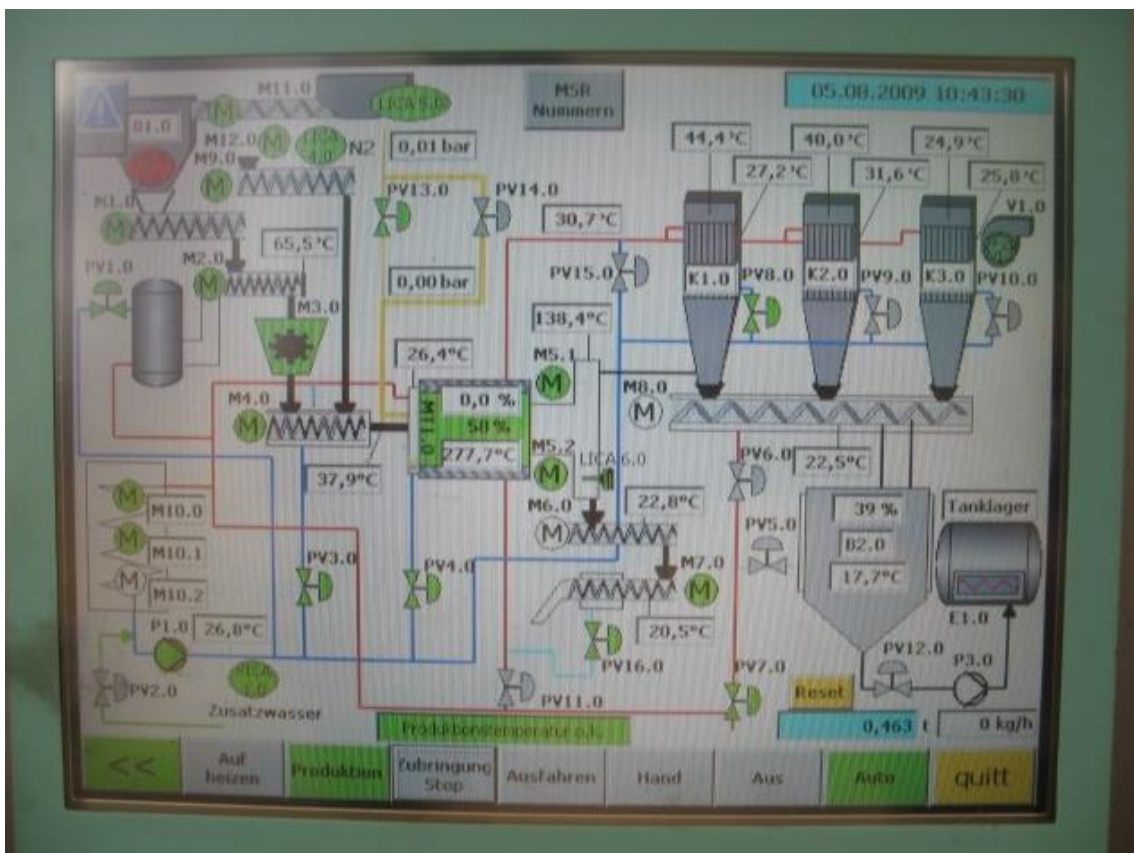


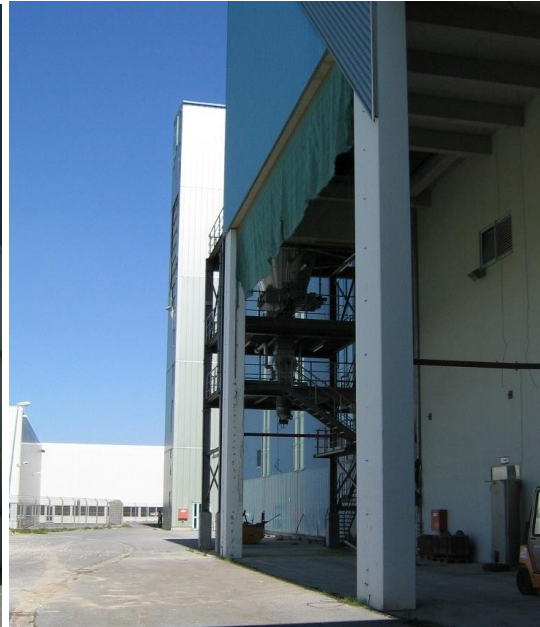
A) Photo of Laboratory & Test installation in Munich, Germany of Patented Process



B) Photo of Control Panel



C) Photo of first factory in Germany of Patented Process. 300.000 Tn / year. Demo plant.



D) Photo - Factory 2 in Germany ó Patented Process. 300.000 Tn/year. For 2014.



E) Photo ó Germany. 1980s. large CCC processing factory 4 million Tn/year capacity.



F) Photo - Modern Factories in Japan ó Process at 700°C.

